

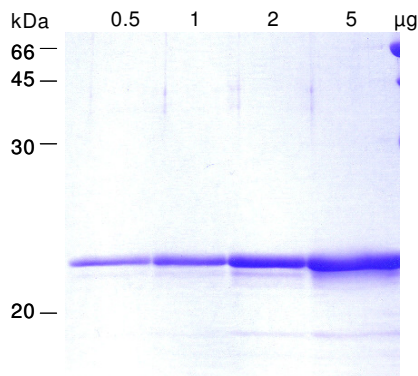
## Certificate of Analysis

<b>Product</b>	<b>CK2beta (CSNK2B)</b> <b>human, recombinant, expressed in E.coli</b>	
Cat No	PK-011-01	
Lot No	260704	
<b>Description</b>	Purified human recombinant CK2beta, expressed in E.coli as non fusion protein. The beta subunit is the non-catalytic subunit of serine/threonine protein kinase CK2. It is possibly interacting with other protein kinases as well. It has no kinase activity by itself, confers stability to the CK2 alpha subunit, and is involved in modulation of activity and substrate specificity. Purified by several chromatography steps. M.W. 24,900. Approved HUGO gene symbol: CSNK2B Synonyms: protein kinase CK2 beta subunit, casein kinase 2 beta subunit	
<b>Quality</b>	Purity	> 95 % by SDS PAGE
	Protease activity (Twining test)	none
<b>Form</b>	Solid. Lyophilized from 25 mM Tris-HCl, 500 mM NaCl, 1 mM DTT, 1 mM EDTA, protease inhibitor cocktail (5 tablets Roche Cat No 1 697 498 per liter) pH 8.5. Solubilize in distilled H <sub>2</sub> O or 50 % glycerol.	
<b>Package size</b>	10 microgram	
<b>Storage condition</b>	-70 °C	
<b>Shipment conditions</b>	dry ice	

*Material for in vitro research use only. Not for pharmaceutical or drug application. Material does not contain any animal products such as albumin.*

**AVOID FREEZE/THAW CYCLES**

## SDS-PAGE analysis



## Amino acid sequence information

M1 corresponds to M1 of X16937

MSSSEEVSWI	SWFCGLRGNE	FFCEVDEDYI	QDKFNLTGLN	EQVPHYRQAL	50
DMILDLEPDE	ELEDNPNQSD	LIEQAAEMLY	GLIHARYILT	NRGIAQMLEK	100
YQQGDFGYCP	RVYCENQPML	PIGLSDIPGE	AMVKLYCPKC	MDVYTPKSSR	150
HHHTDGAYFG	TGFPHMLFMV	HPEYRPKRPA	NQFVPRLYGF	KIHPMAYQLQ	200
LQAASNFKSP	VKTIR				215

## References

- Grankowski N, Boldyreff B, Issinger OG 1991 Eur J Biochem 198: 25-30  
Meggio F, Boldyreff B, Marin O, Pinna LA, Issinger OG 1992. Eur J Biochem 203: 293-297  
Issinger OG, Brockel C, Boldyreff B, Pelton JT 1992 Biochemistry 31: 6098-6103