

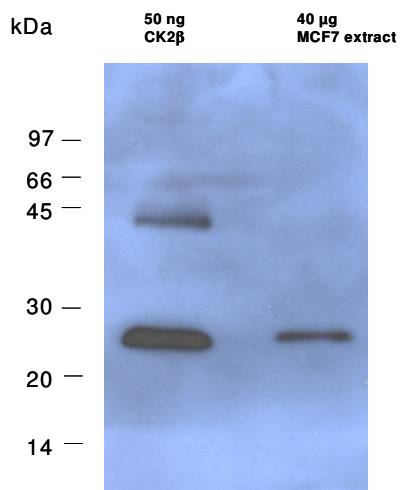
## Certificate of Analysis

<b>Product</b>	<b>Anti-human protein kinase CK2 beta-subunit (clone (6D5) murine, monoclonal IgG</b>
Cat.No.	PKA-002-01
Lot No	190704
<b>Description</b>	Murine monoclonal antibody produced against the recombinant beta subunit of protein kinase CK2. Affinity-purified IgG (protein A agarose), specific to the casein kinase 2 beta-subunit, epitope was mapped to (123)GLSDI(127). Immunogen: Purified recombinant human CK2 beta subunit Cross-reactivity: Bovine, mouse, rat, hamster (so far tested)
<b>Form</b>	Lyophilized from PBS
<b>Handling and Use</b>	Rehydration: Reconstitute in 125 µl double distilled water Application: 1. Western Blot Analysis: use at 1 microgram/ml 2. Immunocytochemistry: use at 12 microgram/ml
<b>Package size</b>	50 microgram
<b>Storage condition</b>	-20 °C
<b>Shipment conditions</b>	room temperature

*Material for in vitro research use only. Not for pharmaceutical or drug application. Material does not contain any animal products such as albumin.*

**AVOID FREEZE/THAW CYCLES**

## Western blot analysis



## Reference

Nastainczyk W, Schmidt-Spaniol I, Boldyreff B, Issinger OG 1995 Hybridoma 14: 335-339