

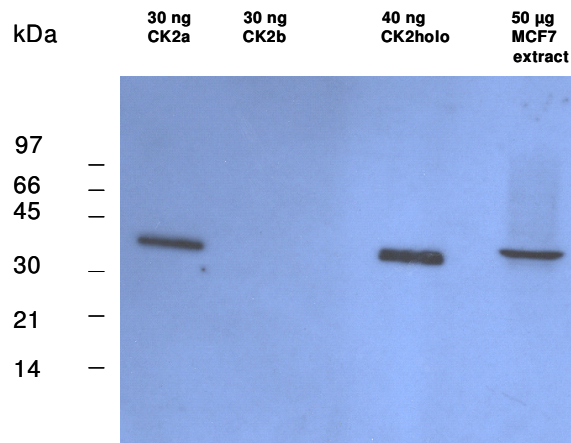
Certificate of Analysis

Product	Anti-human protein kinase CK2 alpha-subunit (clone 1AD9) murine, monoclonal IgG
Cat No	PKA-001-01
Lot No	250304
Description	Murine monoclonal antibody produced against the recombinant alpha subunit of protein kinase CK2. Affinity-purified IgG (protein A agarose), specific to the protein kinase CK2 alpha-subunit, epitope was mapped to (319)MEHPYF(324). Immunogen: SDS-denatured, purified recombinant human CK2 alpha subunit Cross-reactivity: Bovine, mouse, rat, hamster (so far tested)
Form	Lyophilized from PBS
Handling and Use	Rehydration: Reconstitute in 75 µl H ₂ O Application: 1. Western Blot Analysis: use at 1 microgram/ml 2. Immunocytochemistry: use at 25 microgram/ml
Package size	100 microgram
Storage condition	-20 °C
Shipment conditions	room temperature

Material for in vitro research use only. Not for pharmaceutical or drug application. Material does not contain any animal products such as albumin.

AVOID FREEZE/THAW CYCLES

Western blot analysis



References

- Schmidt-Spaniol I, Boldyreff B, Issinger OG 1992 Hybridoma 11, 53-59
Nastainczyk W, Issinger OG, Guerra B 2003 Hybrid Hybridomics 22: 87-90