

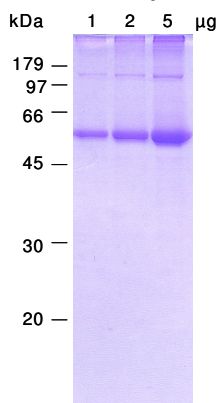
## Certificate of Analysis

<b>Product</b>	<b>AKT1/PKBalpha, unactive human recombinant, expressed in Sf9 cells, N-His-fusion protein</b>	
Cat No	PK-002-01	
Lot No	270405	
<b>Description</b>	Purified recombinant human AKT1 kinase (PKBalpha) expressed in Sf9 cells. Unactive form. Not phosphorylated at Thr308 and Ser473. Purified by Ni-NTA agarose chromatography. Sequence based calculated M.W. 59,055 Approved HUGO gene symbol: AKT1 Synonyms: v-akt murine thymoma viral oncogene homolog 1, protein kinase B alpha, RAC, RAC-alpha, PKB, PRKBA	
<b>Quality</b>	Protein concentration (Bradford with BSA as standard)	1.9 mg/ml
	Purity	> 90 % by SDS PAGE
	Specific activity (* 1 Unit is defined as 1 picomole phosphate transferred to synthetic peptide (RPRAATF) per min at 30 °C)	235 Units*/ mg
	Protease activity (Twining test)	none
<b>Form</b>	Liquid. In 50 mM Tris-HCl, 100 mM NaCl, 1 mM DTT, 25 mM beta-glycerophosphate, 50 % glycerol, pH 8.5.	
<b>Package size</b>	20 microgram	
<b>Storage condition</b>	-70 °C	
<b>Shipment conditions</b>	dry ice	

*Material for in vitro research use only. Not for pharmaceutical or drug application. Material does not contain any animal products such as albumin.*

**AVOID FREEZE/THAW CYCLES**

## SDS-PAGE analysis



## Amino acid sequence information

M29 corresponds to M1 in BC000479

MSYYHHHHHH	DYDIPTTENL	YFQGAMGSMS	DVAIVKEGWL	HKRGEYIKTW	50
RPRYFLLKND	GTFIGYKERP	QDVDQREAPL	NNFSVAQCQL	MKTERPRPNT	100
FIIRCLQWTT	VIERTFHVET	PEEREWTTA	IQTVADGLKK	QEEEEMDFRS	150
GSPSDNSGAE	EMEVSLAKPK	HRVTMNEFEY	LKLLGKGTFG	KVILVKEKAT	200
GRYAMKILK	KEVIVAKDEV	AHTLTENRVL	QNSRHPFLTA	LKYSFQTHDR	250
LCFVMEYANG	GELFFHLSRE	RVFSEDRARF	YGAEIVSALD	YLHSEKNVVY	300
RDLKLENLML	DKDGHKIDT	FGLCKEGIKD	GATMKTFCGT	PEYLAPEVLE	350
DNDYGRAVDW	WGLGVVMYEM	MCGRLPFYNQ	DHEKLFELIL	MEEIRFPRTL	400
GPEAKSLLSG	LLKKDPKQRL	GGGSEDAKEI	MQHRFFAGIV	WQHVVYEKLS	450
PPFKPQVTSE	TDTRYFDEEF	TAQMITITPP	DQDDSMCEVD	SERRPHFPQF	500
SYSASGTA					508